

## ASX ANNOUNCEMENT

20 July, 2010



Western Desert Resources, a diversified resources business with a portfolio of quality mineral exploration assets in the Northern Territory.

Western Desert Resources' business is built on the exploration of its substantial portfolio of iron ore, gold, base metals and uranium projects in the world-class mining provinces of Australia and will continue to grow through the generation and acquisition of new opportunities and resources.

### FAST FACTS

ASX Code	WDR
Issued Shares	135m
Market Cap	A\$51M
Cash & Investments	A\$6.5M

### DIRECTORS

Norm Gardner	MD
Mick Ashton	Director
Graham Bubner	Director
David Cloke	Director
Phillip Lockyer	Director

### COMPANY HIGHLIGHTS

#### Iron Ore

- Roper Bar & Mountain Creek projects (NT)
- Hematitic iron ore
- Total Inferred Mineral Resource 116Mt @ 39% Fe including potential DSO of 7Mt @ 59% Fe (Roper Bar JV)
- Low Impurities
- Aggressive exploration planned
- Proximity to coast and markets

#### Gold / Copper

- East Rover Project near Tennant Creek (NT)

### CONTACT DETAILS

Level 1, 26 Greenhill Rd  
WAYVILLE, SA, 5034  
T: +61 8 8177 8800  
info@westerndesertresources.com.au

ABN: 48 122 301 848

## WESTERN DESERT FINALISES 100% INTEREST IN ROPER BAR IRON ORE PROJECT

### Key Points:

- Western Desert receives Ministerial approval to buy-back Itochu's 20% interest.
- Western Desert regains 100% control over Roper Bar – Mountain Creek iron ore province, including the marketing rights.
- Accelerated exploration program planned for this season.

The Directors of Western Desert Resources Limited (**ASX: WDR**) are pleased to announce that WDR has received Ministerial approval pursuant to an agreement, announced to the ASX on 3 May 2010, with Roper Bar Farm-in partner IMEA Exploration and Development of Australia Pty Ltd ("IEDA") a wholly owned subsidiary of Itochu, for WDR to buy back IEDA's 20% interest in the Roper Bar project.

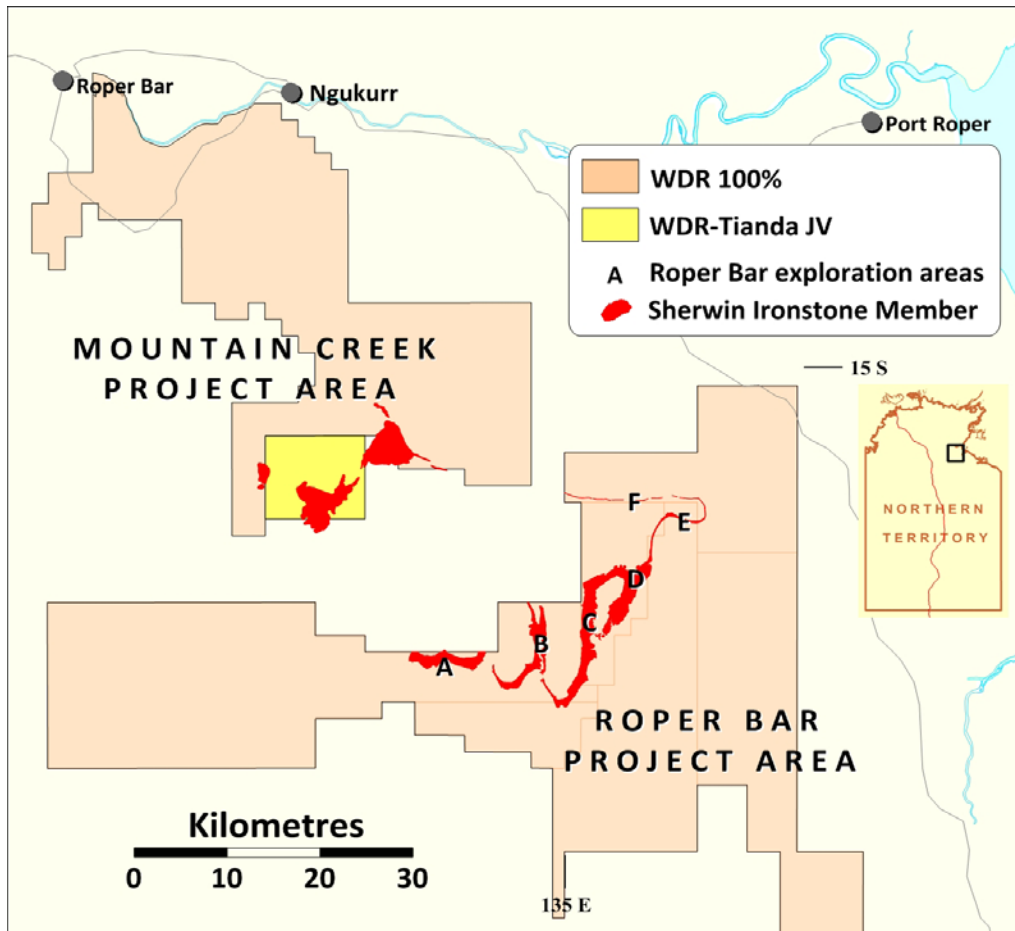
Under the terms of the Sale and Purchase Agreement WDR's wholly owned subsidiary, WDR Iron Ore Pty Ltd, has now acquired IEDA's 20% interest in the Roper Bar project for a cash consideration of A\$2.75 million. IEDA has also relinquished its marketing rights as a result of the transaction.

**This approval means WDR has now regained full 100% ownership of this emerging iron ore region in the Northern Territory.**

The Roper Bar iron ore project comprises six granted exploration licences containing extensive hematitic iron ore horizons within the Sherwin Formation. To date Inferred Mineral Resources of 116Mt @ 39% Fe including a DSO component have been established from a limited drilling program last year over a small part of the outcropping Sherwin Formation.

The Roper Bar project covers about 1,200 square kilometres, including an estimated 55 square kilometres of outcrop of the target Sherwin Formation. WDR also has 100% of the adjacent Mountain Creek iron ore project, which contains the continuation of the Sherwin Formation and will be subject of initial drilling this year.

For field season 2010 WDR has planned an aggressive exploration campaign for the project. This includes infill resource drilling at Roper Bar Areas D, E and F, initial resource drilling at Areas B and C, and initial exploration drilling in un-tested areas elsewhere at Roper Bar and at Mountain Creek.



**Roper Bar – Mountain Creek Iron Ore Province Location Map**

**For further information please contact:**

Norm Gardner  
Managing Director  
Western Desert Resources Limited  
Tel: (08) 8177 8800  
Email: [info@westerndesertresources.com.au](mailto:info@westerndesertresources.com.au)

Felicity Nuttall  
Professional Public Relations  
Tel: (08) 9388 0944  
Email: [felicity.nuttall@ppr.com.au](mailto:felicity.nuttall@ppr.com.au)

---

### **Competent Person's Statements**

*The information in this report that relates to Exploration Results, Mineral Resources and Ore Reserves is based on information compiled by John Fabray who is a member of the Australasian Institute of Mining and Metallurgy. Mr Fabray is a full time employee of Western Desert Resources Ltd and has sufficient experience relevant to the styles of mineralisation under consideration and to the subject matter of the report to qualify as a Competent Person as defined in the 2004 edition of the Australasian Code for the Reporting of Exploration Results, Mineral Resources and Ore Reserves (JORC code). Mr Fabray consents to the inclusion in the report of the matters based on his information in the form and context in which they occur.*