

Western Desert Resources, a diversified resources business with a portfolio of quality mineral exploration assets in the Northern Territory.

Western Desert Resources' business is built on the exploration of its substantial portfolio of iron ore, gold, base metals and uranium projects in the world-class mining provinces of Australia and will continue to grow through the generation and acquisition of new opportunities and resources.

#### FAST FACTS

ASX Code	WDR
Issued Shares	130m
Market Cap	A\$67M
Cash & Investments	A\$10M

#### DIRECTORS

Norm Gardner	MD
Mick Ashton	Director
Graham Bubner	Director
David Cloke	Director

#### COMPANY HIGHLIGHTS

##### Iron Ore

- Roper Bar JV & Mountain Creek projects (NT)
- Hematitic iron ore
- Total Inferred Mineral Resource 116Mt @ 39% Fe including potential DSO of 7Mt @ 59% Fe (Roper Bar JV)
- Low Impurities
- Aggressive exploration planned
- Proximity to coast and markets

##### Gold / Copper

- East Rover Project near Tennant Creek (NT)

#### CONTACT DETAILS

Level 1 26 Greenhill Rd  
WAYVILLE, SA, 5034  
T: +61 8 8177 8800  
info@westerndesertresources.com.au

ABN: 48 122 301 848

## WESTERN DESERT IDENTIFIES THREE TARGETS IN AIRBORNE EM SURVEY AT LIMBLA PROJECT

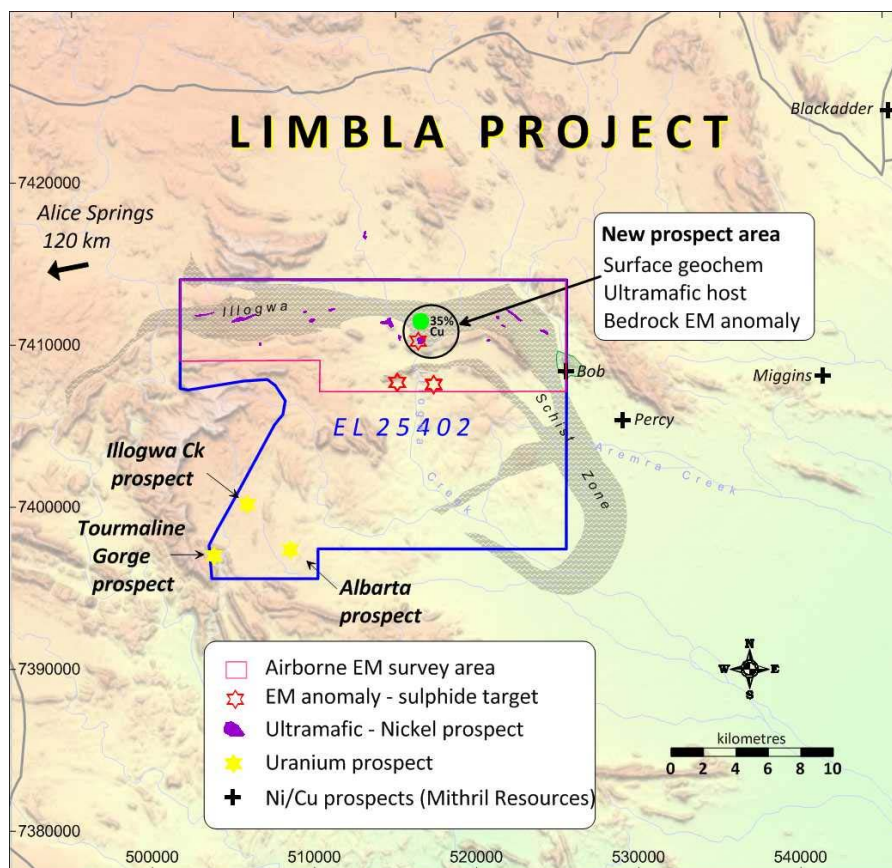
### Key Points:

- REPTTEM survey completed over Limbla Project
- Three significant EM targets require follow-up
- Adjacent to Mithril Resource's recent Cu/Ni discoveries

Western Desert Resources Limited (ASX: WDR) is pleased to announce that a recent airborne Electromagnetic (EM) survey conducted over the northern portion of the company's 100%-owned Limbla Project in the Northern Territory has delineated a number of EM targets.

The targets may be associated with basic or ultramafic rocks and are located within a major shear zone hosted by Palaeoproterozoic basement rocks.

Mithril Resources recently reported significant copper and nickel mineralisation associated with gabbros and amphibolites in its adjoining tenements to the east of the Limbla Project.



## Survey Details

The EM survey was flown with a helicopter-based Geosolutions REPTM time domain system on north-south lines spaced at 200m.

The aim of the survey was to delineate any bedrock conductors associated with sulphide mineralisation within the Illogwa Schist Zone. This major shear zone is located in the northern part of EL25402 and is 3km wide and strikes east-west for a distance of more than 25km (refer to Figure 1).

Recent work by the Northern Territory Geological Survey (NTGS) has shown that the area is prospective for shear zone-hosted Au-Cu mineralisation and grab samples from one prospect returned assays of 35.4%Cu and 0.12g/t Au.

There are also a number of mafic and ultramafic bodies within the shear zone and these may be prospective for Cu-Ni mineralisation similar to that reported by Mithril Resources from their ground immediately east of the Limbla Project.

Most of the EM targets delineated by the airborne survey lie within or adjacent to the Limbla Schist Zone.

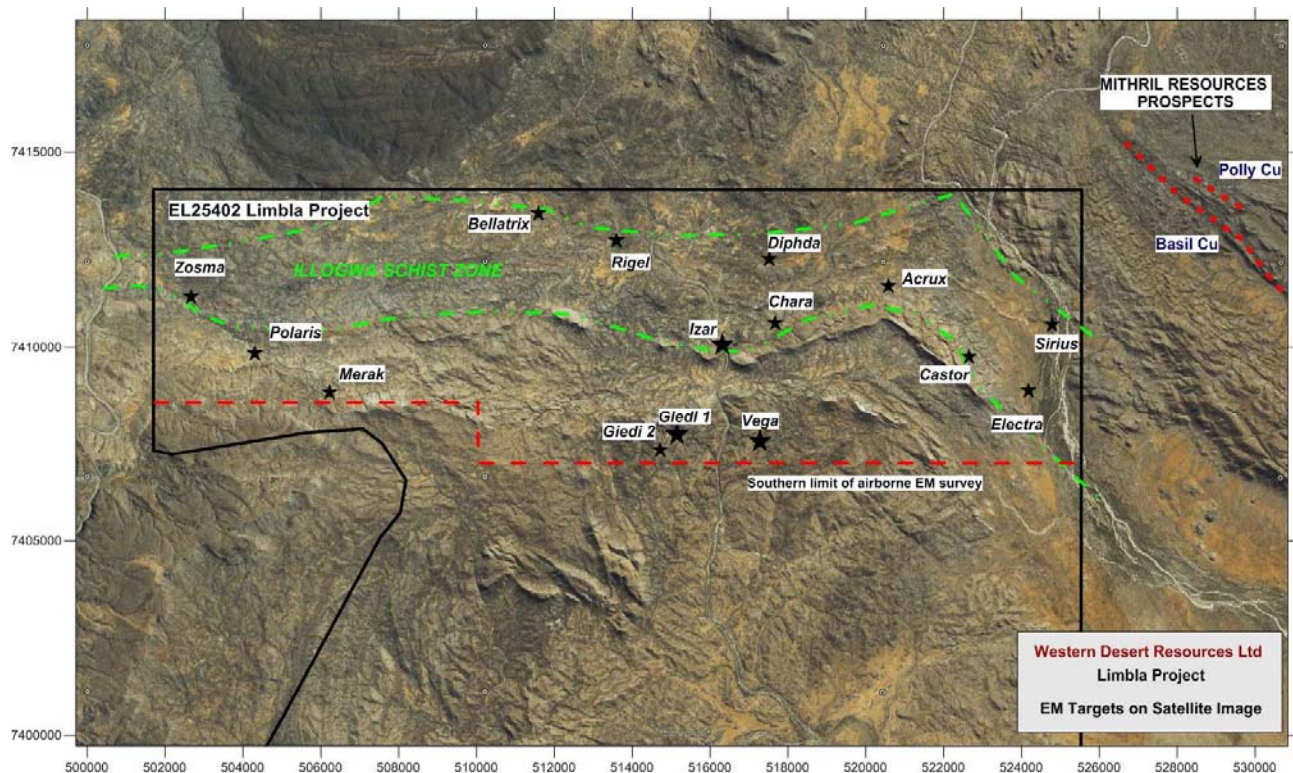


Figure 1

A reconnaissance field trip will be undertaken in March to take grab samples from each of the targets and to determine if there is any surface expression of possible bedrock conductors. Further work including drilling may be undertaken if the initial results are encouraging.

**For further information please contact:**

Norm Gardner  
Managing Director  
Western Desert Resources  
Tel: (08) 8177 8800  
Email: [info@westerndesertresources.com.au](mailto:info@westerndesertresources.com.au)

Felicity Nuttall  
Professional Public Relations  
Tel: (08) 9388 0944  
Email: [felicity.nuttall@ppr.com.au](mailto:felicity.nuttall@ppr.com.au)

---

**Competent Person's Statements**

*The information in this report that relates to Exploration Results, Mineral Resources and Ore Reserves is based on information compiled by John Fabray who is a member of the Australasian Institute of Mining and Metallurgy. Mr Fabray is a full time employee of Western Desert Resources Ltd and has sufficient experience relevant to the styles of mineralisation under consideration and to the subject matter of the report to qualify as a Competent Person as defined in the 2004 edition of the Australasian Code for the Reporting of Exploration Results, Mineral Resources and Ore Reserves (JORC code). Mr Fabray consents to the inclusion in the report of the matters based on his information in the form and context in which they occur.*